

Value-adding partnership

Join us and the partnership will give the following:

- Obtain tools and inspiration for new strategies and working processes to implement in your operations.
- Set the research agenda for joint efforts.
- Collaborate in joint research projects with academia, research institutes and partners in industry and authorities involved.
- Capacity building through close contact with other experts within the life cycle field.
- Obtain access to high quality decision support and a network of almost 500 life cycle professionals.
- Find new ways to manage long-term sustainability.
- Make a larger impact through joint efforts to influence national and international initiatives.
- Benchmark with partners within the center.
- Be highlighted as a frontrunner in sustainability. Your good examples, research and other initiatives are communicated by Swedish Life Cycle Center.
- Access to web forum for close contact with partners and regular updates.

Partners in Swedish Life Cycle Center are:

- Committed to sustainable development and to life cycle thinking and have their own involvement in and resources for these commitments.
- Interested in initiating and being part of joint activities within the center.
- Interested in developing science-based ways of working to create credible cross-sectoral solutions.
- Advocates for the Swedish Life Cycle Center and its common vision, mission and goals.
- Important resources and excellence in research and other activities.

Partners 2025



In collaboration with

The Center hosts a dialogue group for government agencies in Sweden, engages small and medium-sized companies through a letter of collaboration and enters into collaborative partnerships with other life cycle organizations at a global level.



STAGE 11

01-01-2025 - 31-12-2027

Operational plan - Appendix A

Swedish Life Cycle Center is a Center of Excellence for competence building and knowledge exchange to drive the life cycle field forward. We co-create an arena for universities, research institutes, industrial players and authorities to collaborate in.


Swedish Life Cycle Center


Chalmers University of Technology
Department: Technology Management and Economics
Area of Advance: Production

Text by Technical secretariat

Contact

 www.lifecyclecenter.se

 lifecyclecenter@chalmers.se

 Swedish Life Cycle Center

General information

This operational plan is an appendix (Appendix A) to the main agreement for the Swedish Life Cycle Center Stage 11 (2025-2027).

Approved by the Board

19-11-2024

Complementary documents

This operational plan is one of the Center's steering documents, which are available for partners on lifecyclecenter.se.

The societal challenge

We are collectively facing immense challenges with unsustainable consumption and production systems which lead to an increased burden on the environment and on society. A better understanding of the life cycle perspective is a key to achieving sustainable solutions (environmental, social and economic). Our global society consists of chains of organisations and individuals which move resources around the world. The only way to address sustainability issues on a long-term basis is with a holistic life cycle perspective, which aims for resource efficiency and minimized environmental and social impacts without suboptimal solutions, while also creating new business opportunities and innovations.

A life cycle perspective

One of the advantages of a life cycle perspective is the focus on different parts of consumption and production systems and the links between them. It highlights the fact that actions at one end of the value chain also affect other parts of the chain. With a life cycle perspective, suboptimization can be avoided, and optimizations made in value chains are encouraged. In other words, a life cycle perspective is necessary for real sustainable improvements. To address major societal challenges in a comprehensive manner, the life cycle concept provides a means of increasing efficiency, reducing environmental and societal impacts and conserving resources. All processes are covered – from raw material acquisition to the end-of-life and next life of a product, via production and the use phase. Both physical and monetary flows are covered within the life cycle concept, which illustrates how the entire chain of actors work together to create products and services.

Our reason to be

We believe that a life cycle perspective should be a natural, integrated cornerstone in processes and decision making at all levels in business as well as in political governance. We are committed to providing platforms for mutual learning and knowledge exchange within and between different sectors such as academia, research institutes, industry and authorities. We are convinced that this is the solution to approach more sustainable consumption and production patterns, increased efficiency of resources and a sustainable transition towards a circular and digitalized society.

“
A neutral platform for cross-sector solutions. Transparency and trust. A global perspective. Scientific base.”

The values & principles on which we build our work!

Vision, mission & strategy

Swedish Life Cycle Center's vision is “Accelerate sustainable transition through science-based life cycle action” and our aim is to drive the life cycle field forward.

Our mission is to work for the advancement and integration of life cycle action in all decision-making processes. We enable competence building and sharing among our members and partners, and host a unique, thriving network of companies, academia, research institutes and government agencies. By fostering these connections and advancements, we aim to enhance resource efficiency, promote a circular economy, and foster innovation.

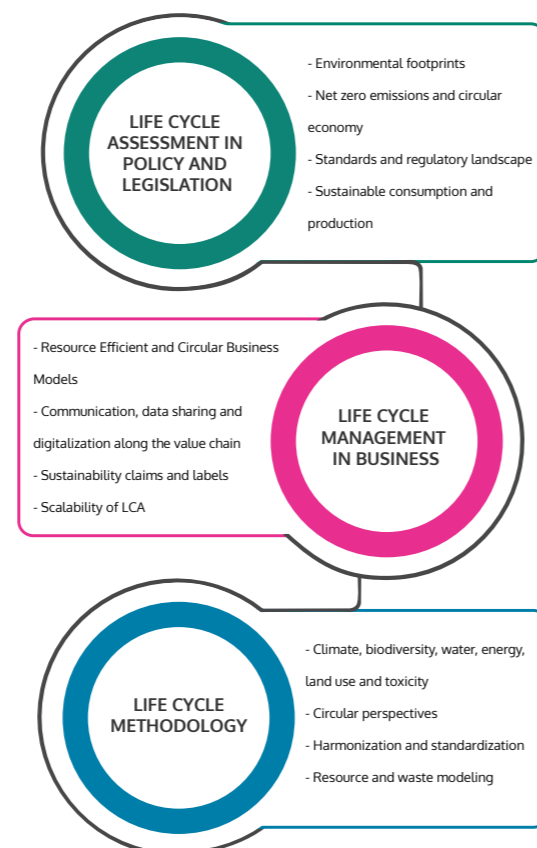
Strategic ways of working

No matter what activities we perform the foundation is:

- Foster relevant and scientifically based methods, practices and tools.
- Support competence and knowledge building.
- Influence national and international initiatives.

Strategic areas

Our strategic areas and their sub areas are based on the vision, mission and on strategic ways of working.



Management & organization

Swedish Life Cycle Center is an organization based on intangible assets with its human resources and excellence distributed among its partners. Chalmers University of Technology hosts the Center.

The permanent organization consists of a Board on which each partner is represented, a Preparatory Board, a Scientific Director and a Technical Secretariat (run by a Director, Project Managers and a Communications Officer). Committees, working groups, expert groups and project groups are established by the Board. Close collaboration with Swedish government agencies also takes place as well as a formal collaboration with SMEs.

How we work

Research projects

Swedish Life Cycle Center has a scientific base, gained from collaboration between the Center's partners in cross-sector research projects. To support the scientific profile of the center a Research strategy has been developed and published during stage 10. We also run other types of projects, which focus on communication, coordination and collaboration in strategic joint efforts.

Working groups and expert groups

The working groups aim to build up competence and exchange experience and information between experts. The groups manage discussions about hands-on issues, methodologies and how to apply them, new research questions and joint strategic intelligence. We also coordinate expert groups for specific tasks or advisory support.

Communication and networking activities

Our main communication and networking activities are workshops, seminars, webinars, trainings and network conferences. These activities are either exclusive to partners or public. For instance, networking activities lead to realizing this operational plan. Our communication channels include LinkedIn, public and partner-exclusive newsletters, our website and our web forum.

Expected outcomes of Stage 11

At the end of Stage 11, with regular follow-ups to set activities and to meet partners' identified needs, the following outcomes are expected to be achieved within each strategic way of working:

Foster relevant and scientifically based methods, practices and tools, through:

- Dissemination and publication of results, such as reports, tools, position papers, working papers and other documents in selected communication channels.
- Initiating and supporting collaborative research projects within strategic areas.
- Promotion of life cycle action through science-based approaches and availability of data.
- Support for increased harmonization through development of life cycle methodology and applications.
- Supporting the development of guidelines and approaches to handle trade offs and conflicting aims.

Support competence and knowledge building, through:

- Cross-sector knowledge sharing between partners.
- Networking activities for doctoral students.
- Continued collaboration with the extended network (SMEs, cutting-edge firms, authorities and funding agencies).
- Facilitation of knowledge transfer by customizing support to different roles in organizations on how to apply life cycle perspectives in decision making.
- Development of courses and training material.

Influence national and international initiatives, through:

- Being an active part of the global life cycle community, e.g. UN Environment's Life Cycle Initiative, Forum for Sustainability through Life Cycle Innovation, Global LCA Data Access network.
- Actively supporting issues related to global and national goals, by working with and implementing key aspects and integrating life cycle perspectives in public policy making.

History

The center has a history of more than 25 years and has become a credible, well known platform for life cycle professionals. It was founded as CPM in 1996 as a joint effort between Nutek (later VINNOVA), Chalmers University of Technology and a range of international companies. Over the years the center has concluded ten stages with different focus areas and partner constellations but the focus on applied life cycle thinking has remained as its base.

Read our entire history [here](#)